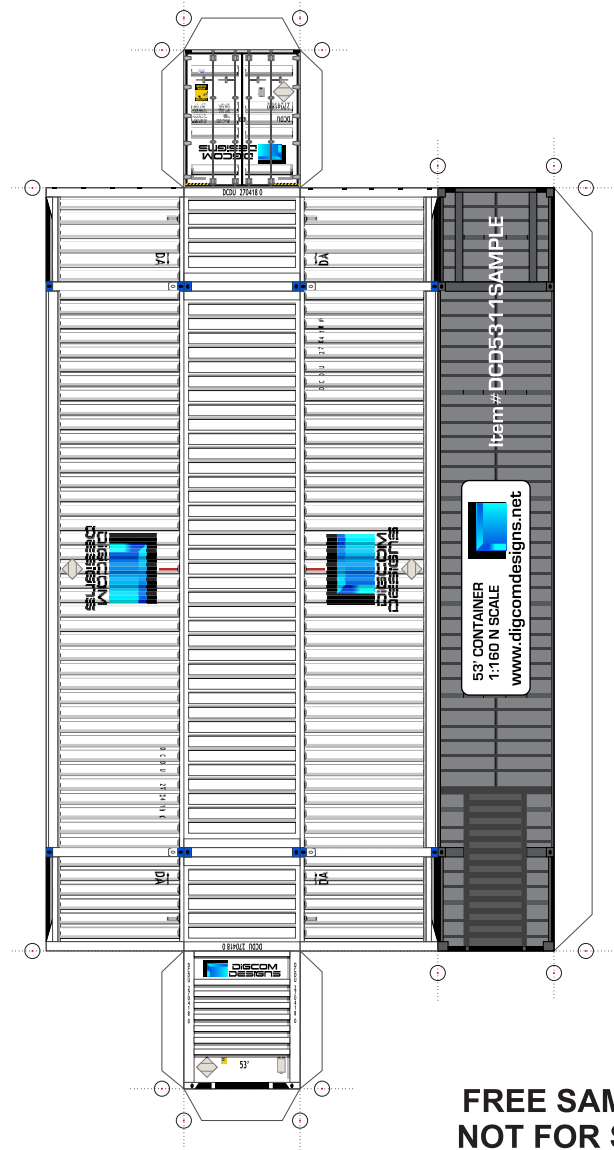
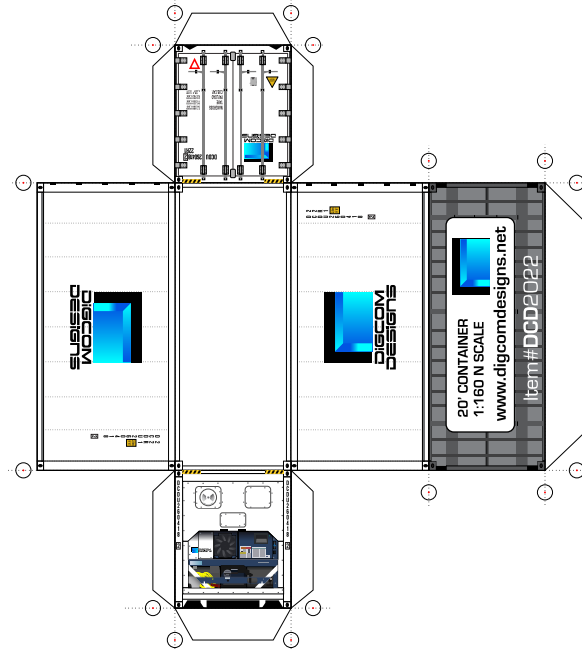
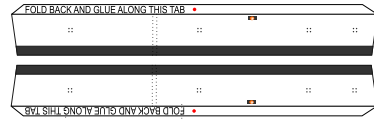
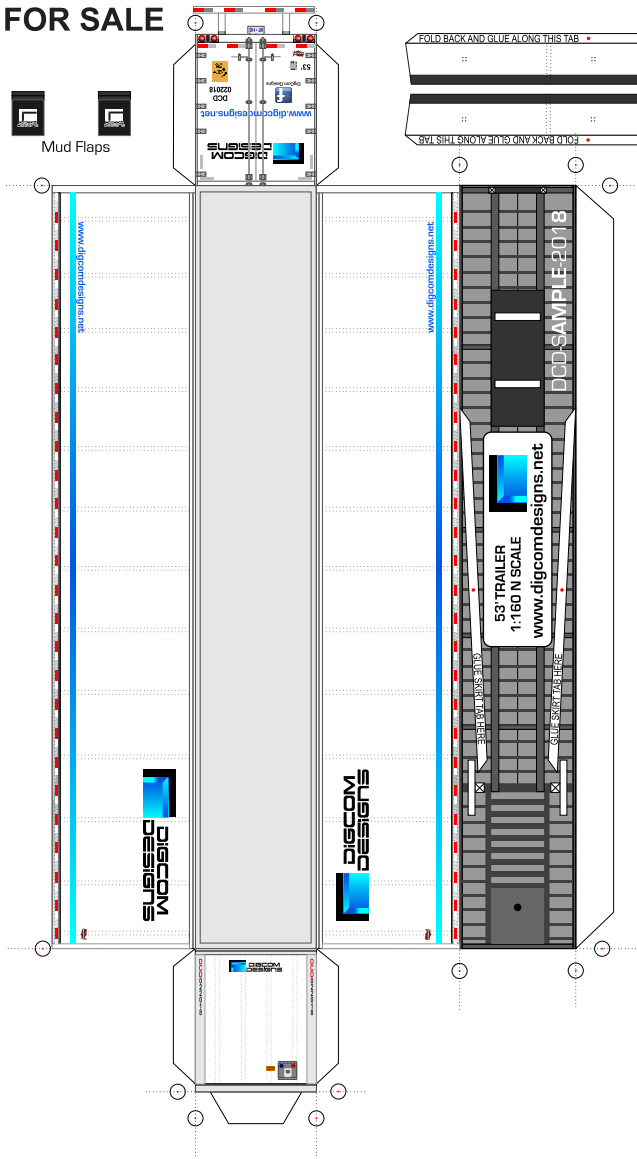


**FREE SAMPLE
NOT FOR SALE**



**FREE SAMPLE
NOT FOR SALE**

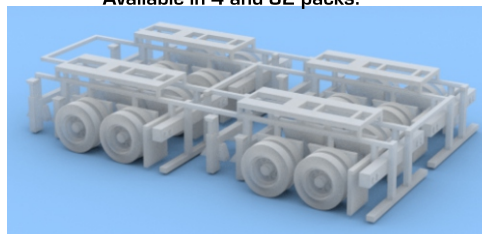
INSTRUCTIONS

- 1.- Using a hobby knife, cut every model out every carefully.
- 2.- Inspect the model well identifying where you will be bending and/or glueing.
- 3.- With the help of a ruler or rigid thin edge, scour the bends beginning from the outside glue tab to the inside.
- 4.- Fold the model up to its intended shape and press the bends tightly with your fingers to break the paper's resistance.
- 5.- Use a toothpick or similar tool to apply glue to the white tabs focusing on the inner edge which will be in closest contact to the model's exterior. Careful not to run too much glue on the tab or it will ooze onto the exterior of the model or fingers ruining your model's final aspect.
- 6.- With each tab, make sure your model is conserving a tight square shape. If one tab was incorrectly glued, you will need to attempt a quick repair to fix it or start over with a new one. A model will not be perfectly square or stable if one tab is miss glued.

DigCom Designs is a registered trademark.
DigCom Designs paper models, drawings, prints, built models and the DigCom Designs logo are protected by Federal law and require written authorization for commercial use.
Violators will be prosecuted.

Copyright©2018 DigCom Designs

We recommend using the following 3D printed kits from Shapeways
Search: <https://www.shapeways.com/search?q=digcom&type=>
or type: DigCom in Shapeway's Search window
Available in 4 and 32 packs!



**DigCom
Designs**
digcomdesigns@hotmail.com

